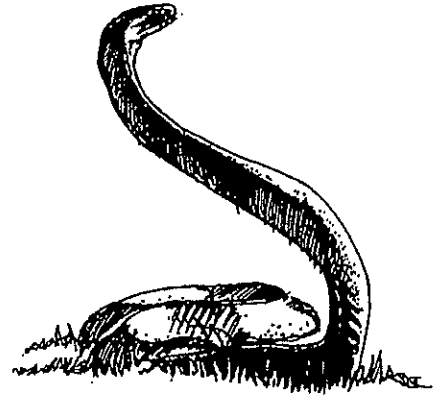


Black Mamba

Story 4, Tracks 6-9
Spanish, Track 10

Review Key Words⁶

- pursue** Pursue means to follow or chase something.
- cornered** Cornered means trapped, in a difficult position, or unable to escape.
- avoid** Avoid means to stay away from.
- ability** Ability is the power to do something.



Write a Prediction

Read the Story⁷⁻⁹

7 In Africa, where the black mamba lives,
13 there are many frightening stories about
21 this deadly snake. Some stories say it uses
28 its **tremendous** speed to chase people for
37 miles. Others **claim** it can stand on its tail
46 and rise as high as a person's head. Still
54 others say it plans attacks on humans by
61 going into their homes. These stories are
69 all **inaccurate**. But it's easy to see how
71 they **originated**.

79 The black mamba is indeed fast. It can
88 move at speeds of over ten miles per hour.
95 But this snake does not **pursue** people.
102 Actually, it tries to **avoid** humans. The
109 black mamba **generally** uses its speed to
flee from enemies.

112 A black mamba can **elevate** a third of
120 its body off the ground. This ability does
128 not mean it can stand as tall as a person.
138 Most black mambas are about nine feet
145 long, so they can raise their bodies about
153 three feet.

155 When people construct houses in the
161 black mamba's **habitat**, the snake
166 sometimes finds its way inside. It isn't
173 planning an attack, but it may bite a person
182 if it feels **cornered**. Unless the person
189 receives **treatment**, the black mamba's
194 venom can kill in less than an hour.

202 Stories may **exaggerate** this snake's
207 abilities. Still, it is clear why people fear
215 the black mamba!
218

words read _____

- errors _____

= _____
cold score

words read _____

- errors _____

= _____
hot score

goal _____

expression _____

date passed _____

Black Mamba

Answer the Questions

1. What is the main idea of this story?
 - a. When people construct houses in the black mamba's habitat, the snake sometimes finds its way inside.
 - b. Most of the stories about the black mamba are inaccurate, but it is easy to see how they originated.
 - c. The black mamba is very fast and is able to move at speeds of over ten miles per hour.
2. How high can a black mamba raise its head off the ground?
 - a. ten feet
 - b. nine feet
 - c. three feet
3. What does the word **elevate** mean in this story?
 - a. to attack
 - b. to lift
 - c. to gain speed
4. Why might a black mamba go into someone's house?
 - a. It might wait there to surprise a person when he or she comes home.
 - b. It might wander into a house that was built in its habitat.
 - c. It might chase someone inside the house.
5. Why do people fear the black mamba?

6. Match each word with its definition.

1. tremendous	a. ___ most of the time
2. treatment	b. ___ started or came to be
3. generally	c. ___ place where something lives
4. originated	d. ___ something that fixes a problem
5. habitat	e. ___ very large or great
7. Fill in each blank with a bold-faced word from the story.

Stories _____ the black mamba's abilities. This snake does not _____ people. Actually, it tries to '_____ people. But people construct houses in the black mamba's _____, and the snake sometimes goes inside. If the black mamba feels _____, it may bite.

Number Correct: _____

Summarize the Story

Number of Words Written: _____